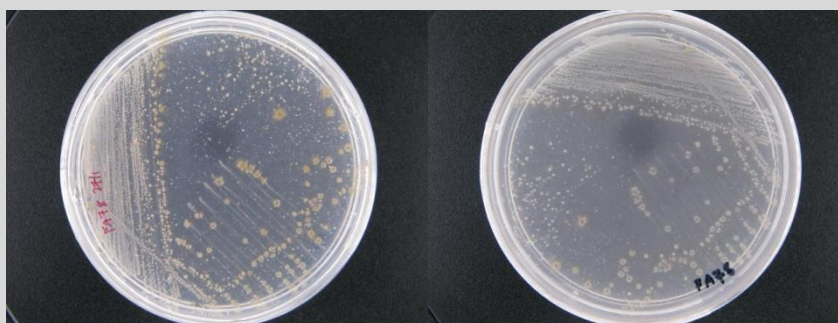


## ***Streptomyces* sp. CCB-SMP200**

### **Colony morphology**

Yellowish brown aerial mycelium; yellow substrate; circular; entire; raised; dry; translucent; small colony size



### **Gram-stain**

Positive, filamentous bacterium

### **Isolation medium**

Starch Casein Agar (SCA) + 50% Artificial sea water (ASW)

### **Growth condition**

Aerobic; pH7; 28±2°C; 7-14 days

### **Sampling date, location, source**

15 May 2014; Taman Paya Bakau, Perak (4.21335 N, 100.64709 E); Sediment

### **Biochemistry/ Physiology**

No

### **16s rRNA gene analysis(EzBioCloud/ NCBI)**

Top-hit taxon *Streptomyces albidoflavus*

Top-hit strain DSM 40455(T)

Similarity (%) 98.87

Top-hit taxonomy Bacteria;Actinobacteria;Actinobacteria\_c;Streptomycetales;Streptomycetaceae;Streptomyces

### **Publication**

No

### **Application**

No

### **Isolated by**

Farizah Hanim bt Lat

### **Risk group**

2

### **Additional information**