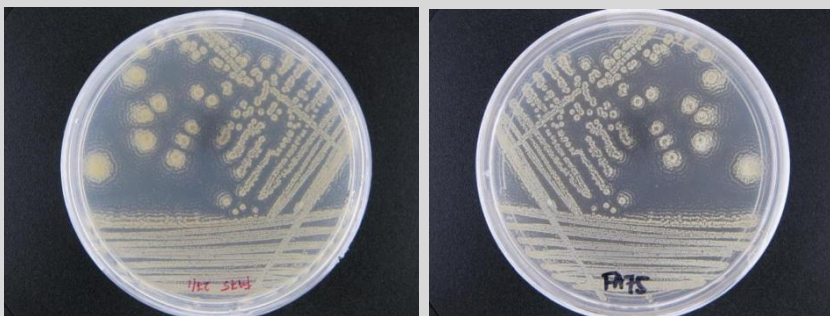


Streptomyces sp. CCB-SMP197

Colony morphology

Yellowish aerial mycelium; yellow substrate; irregular; lobate; raised; dry; no pigmentation; opaque; medium colony size



Gram-stain

Positive, filamentous bacterium

Isolation medium

Starch Casein Agar (SCA) + 50% Artificial sea water (ASW)

Growth condition

Aerobic; pH7; 28±2°C; 7-14 days

Sampling date, location, source

15 May 2014; Taman Paya Bakau, Perak (4.21335 N, 100.64709 E); Sediment

Biochemistry/ Physiology

No

16s rRNA gene analysis(EzBioCloud/N CBI)

Top-hit taxon *Streptomyces violascens*

Top-hit strain ISP 5183(T)

Similarity (%) 100.00

Top-hit taxonomy Bacteria;Actinobacteria;Actinobacteria_c;Streptomycetales;Streptomycetaceae;Streptomyces

Publication

No

Application

No

Isolated by

Farizah Hanim bt Lat

Risk group

2

Additional information