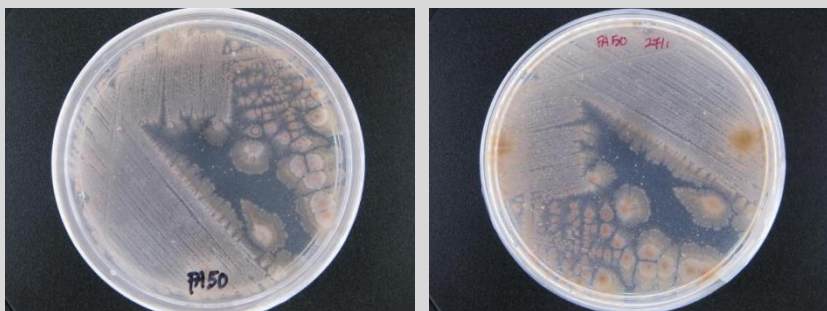


***Streptomyces* sp. CCB-SMP175**

Colony morphology

Peach aerial mycelium; irregular; undulate; flat; dry; opaque; medium colony size



Gram-stain

Positive, filamentous bacterium

Isolation medium

Starch Casein Agar (SCA) + 50% Artificial sea water (ASW)

Growth condition

Aerobic; pH7; 28±2°C; 7-14 days

Sampling date, location, source

15 May 2014; Taman Paya Bakau, Perak (4.21335 N, 100.64709 E); Sediment

Biochemistry/ Physiology

No

16s rRNA gene analysis(EzBioCloud/N CBI)

Top-hit taxon *Streptomyces diastaticus* subsp. *ardesiacus*

Top-hit strain NRRL B-1773(T)

Similarity (%) 97.11

Top-hit taxonomy Bacteria; Actinobacteria; Actinobacteria_c; Streptomyetales; Streptomyetaceae; Streptomyces; Streptomycesdiastaticus

Publication

No

Application

No

Isolated by

Farizah Hanim bt Lat

Risk group

2

Additional information