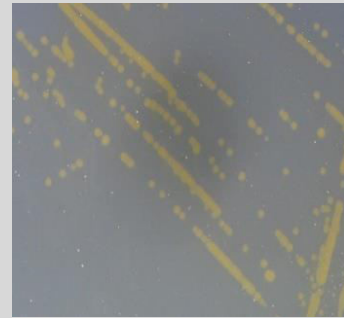


Mangrovimonas sp. CCB-ST2L15

Colony morphology

Beige colony; 1 mm size; circular; entire; raised; glistening; opaque



Gram-stain

Gram-negative

Isolation medium

Tryptone + Artificial sea water (H-ASW) agar;

Growth condition

Aerobic; pH 7.6; 28 ± 2 °C; 24-48 hrs

Sampling date, location, source

2 Oct 2014; Matang Mangrove Forest, Perak (4.85228 N, 100.55777 E); Mangrove estuarine sediment

Biochemistry/ Physiology

No

16s rRNA gene analysis (EzBioCloud/NCBI)

Top-hit taxon *Mangrovimonas* sp.

Top-hit strain LBIQ_s

Similarity (%) 100.00

Top-hit taxonomy Bacteria; Bacteroidetes; Flavobacteria; Flavobacteriales; Flavobacteriaceae; Mangrovimonas

Publication

No

Application

No

Isolated by

Dinesh Balachandra

Risk group

1

Additional information