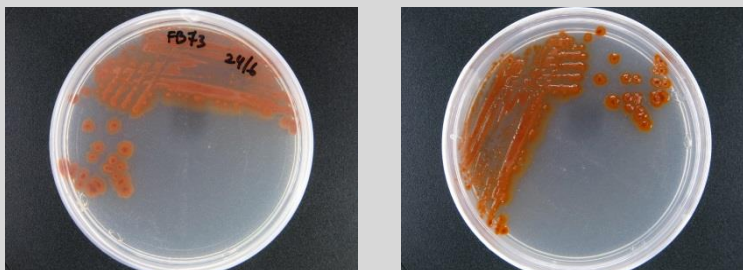


## *Hahella* sp. CCB-SMP265

### Colony morphology

Deep red colony; 4 mm size; circular; entire; raised; smooth; glistening; opaque



### Gram-stain

Negative, rod

### Isolation medium

Nutrient agar (NA) + 50% Artificial sea water (ASW)

### Growth condition

Aerobic; pH7; 28±2°C; 24-48hrs

### Sampling date, location, source

Seri Manjung, Perak

### Biochemistry/ Physiology

No

### 16s rRNA gene analysis(EzBioCloud/N CBI)

Top-hit taxon *Hahella chejuensis*

Top-hit strain KCTC 2396(T)

Similarity (%) 99.77%

Top-hit taxonomy Bacteria; Proteobacteria; Gammaproteobacteria; Oceanospirillales; Hahellaceae; Hahella

### Publication

No

### Application

No

### Isolated by

Siti Nur Fatin binti Ahmad Kamal

### Risk group

2

### Additional information