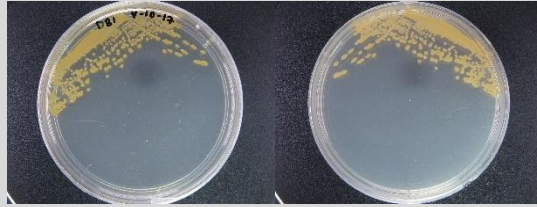


*Bacillus* sp. CCB-PB300

Colony morphology

Orange colony; 1-3 mm size; circular; entire; raised; smooth; glistening; opaque.



Gram-stain

Positive, filamentous rod with cross-like branching

Isolation medium

Marine agar (MA); Marine broth (MB)

Growth condition

Aerobic; pH 7; 28±2°C; 24-48hrs

Sampling date, location, source

11 May 2016; Pulau Betong, Penang (N05°18.761' E111°13.8'); Seawater

Biochemistry/  
Physiology

No

16s rRNA gene  
analysis(EzBioCloud/N  
CBI)

Top-hit taxon *Bacillus algalicola*

Top-hit strain KMM3737(T)

Similarity (%) 97.21

Top-hit taxonomy Bacteria; Firmicutes; Bacilli; Bacillales;  
Bacillaceae; *Bacillus\_g21*

Publication

No

Application

No

Isolated by

Diyana Tarmizi

Risk group

1

Additional information