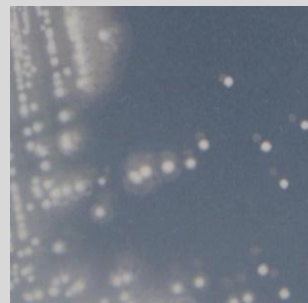


## *Photobacterium* sp. CCB-ST2H22

### Colony morphology

Flourescent green colony; 1 mm size; filamentous; circular; raised; glistening; transparent



### Gram-stain

Gram Negative

### Isolation medium

Tryptone + Artificial sea water (H-ASW) agar;

### Growth condition

Aerobic;pH7.6;28±2°C; 24-48hrs

### Sampling date, location, source

2 Oct 2014; Matang Mangrove Forest, Perak (4.85228 N, 100.55777 E); Mangrove estuarine sediment

### Biochemistry/ Physiology

No

### 16s rRNA gene analysis(EzBioCloud/NCBI)

Top-hit taxon *Photobacterium halotolerans*

Top-hit strain MACL01

Similarity (%) 98.59

Top-hit taxonomy Bacteria;Proteobacteria;Gammaproteobacteria;Vibrionales;Vibrionaceae;Photobacterium

### Publication

No

### Application

No

### Isolated by

DineshBalachandra

### Risk group

1

### Additional information