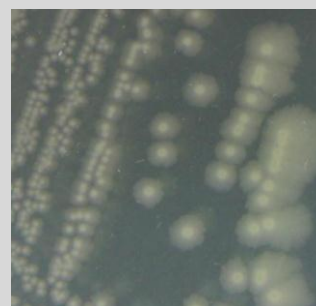


Bacillus sp. CCB-ST3H50

Colony morphology

Pearl white colony; >3mm size; irregular; undulate; umbonate; glistening; opaque



Gram-stain

Gram Positive

Isolation medium

Tryptone + Artificial sea water (H-ASW) agar;

Growth condition

Aerobic;pH7.6;28±2°C; 24-48hrs

Sampling date, location, source

2 Oct 2014; Matang Mangrove Forest, Perak (4.85228 N, 100.55777 E); Mangrove estuarine sediment

Biochemistry/ Physiology

No

16s rRNA gene analysis(EzBioCloud/NCBI)

Top-hit taxon *Bacillus altitudinis*

Top-hit strain 41KF2b(T)

Similarity (%) 100

Top-hit taxonomy Bacteria;Firmicutes;Bacilli;Bacillales;Bacillaceae;Bacillus

Publication

No

Application

No

Isolated by

DineshBalachandra

Risk group

1

Additional information